

Style

- 14 — Scout
- 18 — Product profile
- 20 — Colour palette
- 23 — Bookmark
- 26 — Handmade
- 30 — Paint trends
- 33 — Collection collab

With its handmade tiles, organic curves, and custom ceramic lamp and bowl, this bountiful corner is all about bringing a smile to your dial. It's part of a revamp designed to let the sunshine in Mediterranean-style at a time when the rest of the world felt very far away. Let it transport you on page 20.



Glow up

Pink overhead and peach all around makes everyone in this diminutive deli look like they're on vacation.



Deli/wine bar Pickled Poet in Wollongong, NSW celebrates life's simple pleasures, and its fit-out by design studio We Are Duet was approached in the same way. Spirit-lifting joy is infused into the interior via details such as the gingham-look tiles that reference carefree picnics, and the welcoming curves that offset the linearity of the long bar and widen and tighten to maximise the usable space. Atmospheric day and night, the Mediterranean-inspired colour palette combines hues to delight that you could try at home, including pink and peach paints that radiate a summery glow onto everyone in the room. You could add extras like:



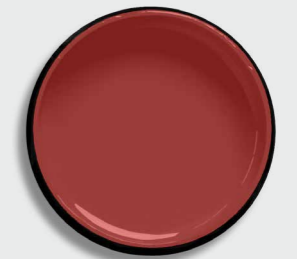
Resene Rulebreaker



Resene Morning Haze



Resene Awaken



Resene Aroha



Resene Petal

Colours from Resene The Range fashion colours collection, available at Resene ColorShops and selected resellers.

Resene
the paint the professionals use

resene.co.nz/colorshops
0800 RESENE (737 363)

OPPOSITE, FROM LEFT 1. Crofton stool by Please Wait To Be Seated, from \$699, slowstore.co.nz. **2.** Limonier saucer by Astier de Villatte x John Derian, \$198, tessuti.co.nz. **3.** Market bag, \$80, citta design.com. **4.** Onemana cushion cover, \$25, wallacecotton.com. **ABOVE, CLOCKWISE FROM TOP LEFT 5.** Newport jug, \$99, fatherrabbit.com. **6.** Pickle & Pie pickles, \$22, paperplanestore.com. **7.** Tumbler by Amokura Glass, \$49, sundayhomestore.co.nz. **8.** V-Fold lampshade, \$399, blacklight.co.nz. **9.** Fold Wavy shelf, \$139, madeoftomorrow.com. **10.** Paloma mug, \$30, cittadesign.com. **11.** Mandarin candle by Nonna's Grocer, \$35, madegood.co.nz. **12.** Drop-leaf table by Ercol, \$3245, goodform.co.nz. **13.** Mina skirt, \$239, nz.kowtowclothing.com. **14.** Fountain centrepiece by Ferm Living, \$549, slowstore.co.nz. **15.** Enamelware dish by Colorama, \$59, boltofcloth.com. **16.** Cutlery set by Sabre, \$399/24 pieces, sundayhomestore.co.nz.

Photography: Pablo Veiga