

FRONT ENTRANCE A first-floor extension has transformed the cute cottage into a characterful home that makes the most of its outlook. Exterior painted Dulux Vivid White with Dulux Rottnest Island trims. **VERANDAH** Carl Hansen & Søn 'Safari' chair and Karakter coffee table, both Cult.

Wait and sea

After living in it for a while, the owner of this beachside beauty on the NSW South Coast decided to extend – and in doing so, built an enduring friendship.

STORY *Jackie Brygel* | STYLING *Kerrie-Ann Jones* | PHOTOGRAPHY *Maree Homer*



KITCHEN Interior designer Dominique Brammah cast her net far and wide to complement Kavita's collected pieces. The barstools, sourced on Gumtree, were powdercoated black and topped with custom velvet seat pads. Joinery by Maple Building & Design, finished in Dulux Briar. Sri Lankan granite benchtop and splashback, WK Marble & Granite. Fisher & Paykel canopy rangehood, available from Harvey Norman. Blackbutt floors, Mint Floors+Shutters. Perrin & Rowe 'lo' mixer tap, The English Tapware Company. Artwork by Anna Placidi. Folding doors, Wideline Windows & Doors.



Renovating can be stressful, with the ever-present potential for unforeseen hurdles to arise as the project progresses. But there are also times when it can be a deeply enriching experience, especially when it forms the foundation for a lasting friendship. This was very much the case for Kavita Faiella and interior designer Dominique Brammah when the pair collaborated on the reinvention of Kavita's 1930s beachside cottage on the NSW South Coast.

"I'm single, and embarking on a major renovation by myself felt daunting," says Kavita, a sommelier and sales and marketing manager for Adelaide Hills winery Shaw+Smith. "But Dom and I got along so well from the outset. If not for her, the house would be half the home it is now." For Dominique, a co-director of interior design firm Duet with Shannon Shlom, this was a memorable project for all the right reasons. "It was a joy," she says. "Kavita is now one of my closest friends. It's a pleasure to see someone living in a house that is so 'her'."

Kavita leapt at the chance to secure the cottage, set on a 297-square-metre block, when it came up for sale seven years ago. ▶



THIS IS THE LIFE

The first-floor main bedroom suite is a true sanctuary for Kavita, and offers a remarkable outlook from its lofty perch. "We were all gobsmacked by the 270-degree view from the first floor, so we decided to drop the walls here to half-height," says interior designer Dominique. "I expected that the view of the water would be wonderful to see as the renovation progressed, but it was actually the view of the escarpment that was the most exciting," adds Kavita. "It still thrills me."

"It was important to build richness into the extension's palette so it felt in harmony with the original details of the cottage and Kavita's collection of vintage treasures."

Dominique Brammah, interior designer



LIVING Gubi 'Adnet' coffee table (left), Cult. Vintage armchairs and coffee table (centre) sourced in Sri Lanka. Sketch 'Sloopy' sofa, Globe West. ClassiCon 'E1027' side table, Anibou. Minerva 08A rug, Robyn Cosgrove. Artwork by Paul Ryan. ▶



FORMAL DINING ROOM The dining table, chairs and cabinets are all vintage pieces from Sri Lanka. They are paired with a Gervasoni 'Brass 95' pendant light from Anibou. Vintage Moroccan rug. The artworks, including *The Hoo* by Jacqui Stockdale (above fireplace), and *Untitled* by Noah Taylor (in cabinet, left) and *Oyster with Lettuce* by Nicholas Harding (in cabinet, right), were sourced by art consultant Anna Meyerowitz of AM Art Projects.

top floor. Having worked for a major resort group in Asia for a decade - more than two years of which were spent in her birth country, Sri Lanka - Kavita had amassed a stunning collection of furnishings. "I love Dutch Colonial design and that inspired the renovation," she says. "I bought some substantial pieces while I was living overseas and was determined to bring them home with me."

Bursts of colour pack a delightful punch in the rooms, their vibrancy popping against the home's refined materials palette. "We talked about colour from the start and I could see Kavita wasn't afraid of using it," says Dominique. Kavita agrees, saying, "I've always loved colour, but working with Dom emboldened me to follow through with my choices."

Earlier this year, Kavita began a joyous new life chapter, becoming a first-time mother to baby son Kiaan Dev. Together, they have now started creating memories in their beautiful house by the sea.

"The skirting may need repainting when Kiaan starts running around," says Kavita, laughing. "There will probably be a lot more sand in the house too, but I will embrace that. I'm looking forward to the future here."

Duet, Sydney, NSW; weareduet.com.au
Nadine K Drafting & Design, Jamberoo, NSW; nadinedesign.com.au.
Maple Building & Design, Sutherland, NSW; maplebuildinganddesign.com.

At the time, the great drawcard was its sublime site. The house is positioned just a few steps from the sand and enjoys uninterrupted, panoramic views of the Pacific Ocean to the south-east and dramatic escarpment vistas to the west. "The original single-level house was full of character but had a strange layout and from inside the house there was no real sense of the beauty beyond its walls," says Dominique.

After living in the two-bedroom home for several years, Kavita engaged the architectural design and construction services of Nadine Ryan from Nadine K Drafting & Design, and Nathan and Jacob

Lewers of Maple Building & Design, before enlisting Dominique's expertise.

Collectively, their work ensures the house now makes the most of its breathtaking location, offering dress-circle views of both the ocean and escarpment from the deck and the upper level. "In the very capable hands of Nadine, everything possible was done during the planning stage to reveal the view," says Dominique. "That meant the original hallway, front bedroom and dining room remained, and the rear of the house was demolished."

In its place are a new kitchen, living area, bathroom, laundry and wraparound deck, plus a main bedroom suite on the



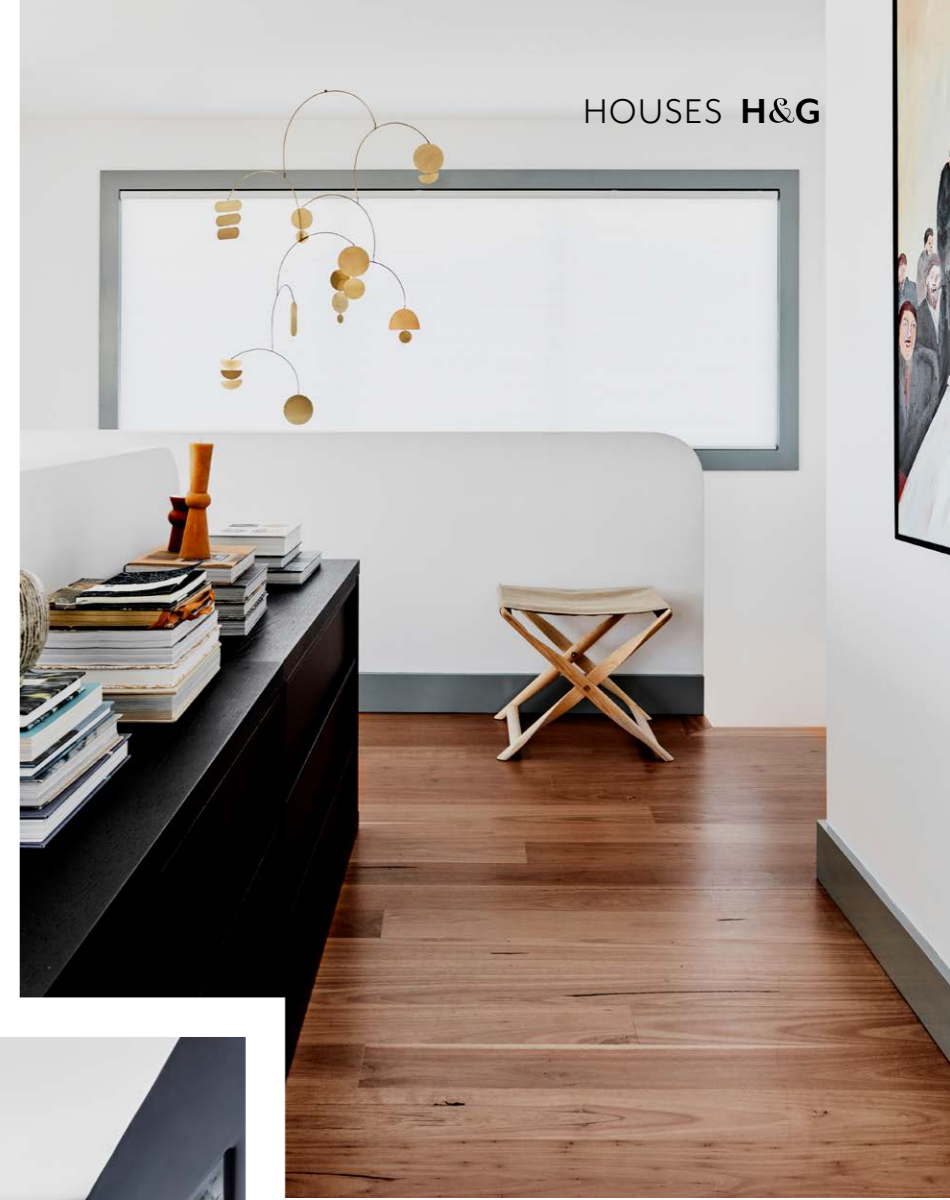
"I bought some substantial pieces when I was living overseas and was determined to bring them home with me." Kavita Faiella, owner

Paint colours are reproduced as accurately as printing processes allow.

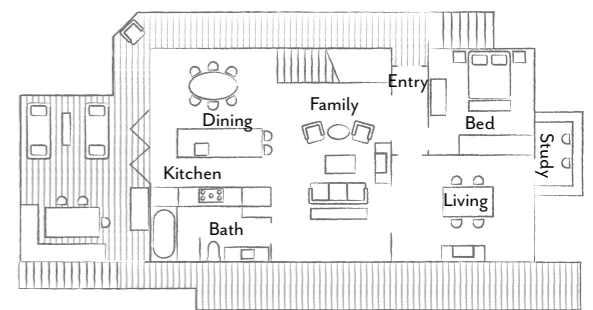
THE PALETTE

- Dulux Vivid White (interior main walls, exterior)
- Haymes Paint Sweet Sage (interior doors and trims)
- Haymes Paint Deep Jungle (formal dining)

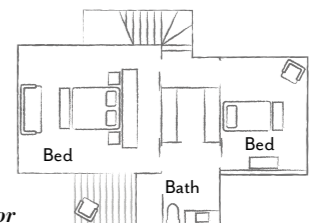
MAIN BEDROOM *This page and opposite top right* The bed is set against a half-height wall that leads to the stairs. *Nothing on the Table* artwork by Georgia Spain. Karakter 'TriAngle' stool, Cult. Bedlinen, In Bed. Egyptian rug in Russet, Armadillo. Custom throw and vintage table lamp by Duet. The brass mobile was custom made by Juno+Ace. Carl Hansen & Søn 'Propeller' stool, Cult. **BATHROOM** *Opposite, top left and bottom* Majorca tiles in Sage from Teranova line the bath and shower area, with terrazzo floor tiles from Surface Gallery. Clark bath, Cass Brothers. Karakter 'TriAngle' stool, Cult. The vanity is a repurposed dresser. Perrin & Rowe tapware, The English Tapware Company. *Pine Chair* artwork by Clara Adolphs. *For Where to Buy, see page 190.* H&G



THE LAYOUT



Ground floor



First floor