



FRONT ENTRANCE Antique Sri Lankan chair. Cushion, Ascraft. Side table, Orient House. Vase, Mercer & Lewis. **CASUAL DINING** Custom wall sconce by Duet. Vintage Swedish occasional chair, upholstered in Textile Celotocaulis from Svenskt Tenn. Roman blind, Marlow & Finch. Painting by Ray Crooke. Dining chairs, Thonet. Knoll 'Tulip' dining table by Eero Saarinen, Moebel. Fruit bowl by Bianca Pintan. Nymph Frog vase by Elizabeth Lewis. Platter, Dinosaur Designs. Wall painted Dulux Natural White. Original flooring with custom stain.



SENTIMENTAL JOURNEY

Bold colour choices and bringing family pieces to the fore delivered an artful new look for this beloved Sydney home.

STORY *Carli Philips* | STYLING *Olga Lewis* | PHOTOGRAPHY *Anson Smart*

ENTRY HALL The landscape painting at left was found at a French flea market. Wall painted Dulux Natural White. The chandelier in the adjacent living room is a Mid-century piece by Barovier & Toso Rostrato from The Vault Sydney.

FORMAL LIVING Opposite Wall painted Dulux Kolya. Roman blinds, Marlow & Finch. Gubi 'Tynell' floor lamp and &Tradition 'Shuffle MHI' side table, both Cult Design. Minotti 'Seymour' sofa, Moebel. Cushions, Tigger Hall Design and Duet. Elle 'Monument' coffee table, GlobeWest. The tiled table and timber console are antiques. Vintage ashtray, Becker Minty. Urn, Orient House. Segovia rug, Robyn Cosgrove.



Like many modern relationships, the one between homeowner Kirsten and design practice Duet began on Instagram after some major scrolling. "I had a call with them on Zoom and they were absolute guns," recalls Kirsten of her initial meeting with Duet co-directors Dominique Brammah and Shannon Shlom.

Kirsten and her husband Sanjee had undertaken a large renovation of their Federation home in Sydney's Lower North Shore in 2009, extending and rebuilding the kitchen, living zone, laundry and study. This time around, the house didn't require structural changes as it was still in excellent condition, but it did need some repair work. Worn floorboards and damaged skirting in the original front rooms had to be restored, and some wonky posts on the verandah needed to be fixed. "Replacing the posts doesn't sound like a big job, but it proved ▶



FORMAL LIVING Antique portrait. Mirror from Macleay on Manning. Chandelier, The Vault Sydney. Barnacle vases (on mantel), Orient House. Original mantelpiece with new Jetmaster fireplace. Vintage leather armchair. Little Petra footstool, Tynell floor lamp and Shuffle side table, all Cult Design. Coffee table, GlobeWest. ▶

“We love to use colour as a way of finding your way around a house.” DOMINIQUE BRAMMAH, INTERIOR DESIGNER

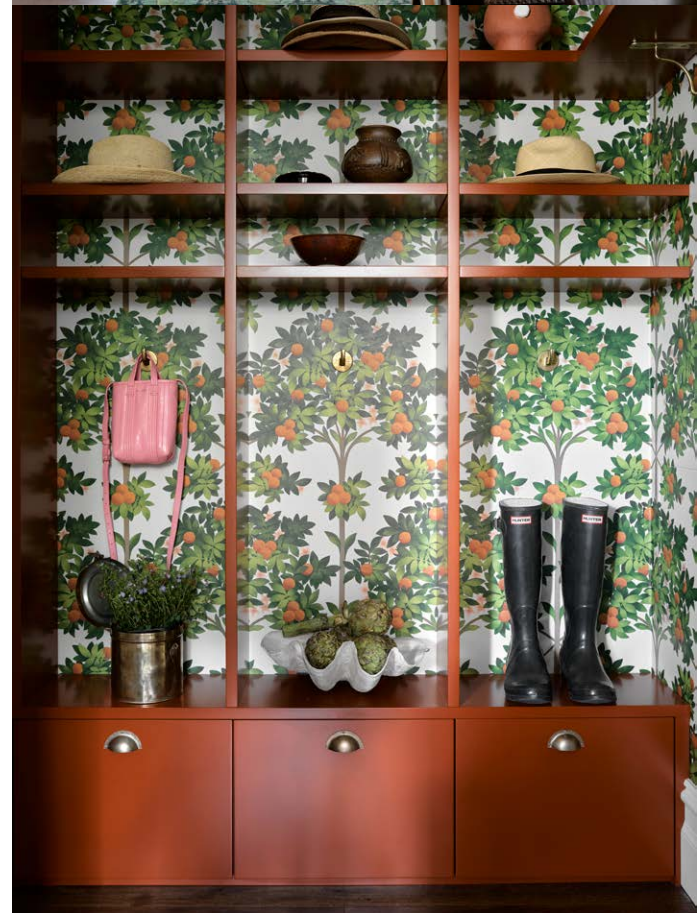


FORMAL LIVING *This page and opposite* Landscape painting by Alexander McKenzie. Antique portrait. Vintage console. Marble bowl, Greg Natale. Urn, Orient House. Antique Sri Lankan chair. Custom TV cabinet designed by Duet, made by Jonathan West. Rug, Robyn Cosgrove. ▶



“Dominique and Shannon were very respectful of everything we wanted to keep.” KIRSTEN, OWNER





difficult as the new posts needed to match the originals because the house is heritage-listed,” says Kirsten.

The kitchen and bathrooms (aside from the powder room) were left as is, but the rest of the house underwent a complete cosmetic and colour refresh, including new window treatments, lighting, furniture and decorative elements. The layout of the house worked well, beginning with the front door that opens into an entry hall featuring a grand carpeted staircase with a powder room tucked underneath. To the left is the original formal living area, surrounded externally by the verandah. Off the entrance hall to the right is the formal dining (a small mudroom is tucked off to the side) that leads to the rear, where there is a shared family dining and living zone with adjacent study. Upstairs, there are four bedrooms, including the main with ensuite and a balcony.

In the first renovation 14 years earlier, Kirsten says they simply didn’t get around to the furnishings. “I remember Sanjee saying, ‘You can choose any sofa – as long as it’s from Ikea!’ Over the years, the kids [Audrey, now 17, Eliza, 15, and Harry, eight] have been all over it and interiors wise, it’s just been pretty boring back there.”

However, the couple did have a beautiful mix of antiques and sentimental furniture they wanted to hang onto. “Dominique and Shannon were very respectful of everything we wanted to keep,” adds Kirsten.

“Often you arrive at a new project with a clean slate, but this was not one of those – and that excited us beyond words,” says Dominique. “Kirsten and Sanjee had an incredible collection of treasures, all of which had a story.”

Must-keeps included all of the couple’s artworks, a green-tiled table bought at a closing down sale while Kirsten was pregnant with Audrey, a beloved buffet designed by renowned Adelaide furniture-maker Khai Liew that they waited ▶



FORMAL DINING This page and opposite top Artworks in this room include a vintage advertising poster (left) and a painting by Jackie Stockdale from Olsen Gallery. Art Deco chandelier by Ercole Barovier, The Vault Sydney. Sideboard by Khai Liew. Tray and vintage decanter set (on sideboard), Becker Minty. Vessel on sideboard from Orient House. Vintage dining table. The Tissé dining chairs, Worn Store. Vintage Sri Lankan carver chair. Vintage vase (on dining table), Kellett Street Studio. Walls painted Dulux Tinker. Minerva rug, Robyn Cosgrove. Original mantelpiece. Antique mirror. Vintage etched vase, Pigott’s Store. Jelly Snake vase by Elizabeth Lewis and Moonbeam vase by Stephanie Phillips, both The DEA Store. **MUDROOM** Opposite bottom Cole & Son ‘Orange Blossom’ wallpaper, Icon Radford. Wall hooks, Mi & Gei.



CASUAL LIVING Landscaping by Annie Wilkes, recently refreshed by Spirit Level. Walls painted Dulux Natural White. *A Touch of Pink* vessel by Katarina Wells, Curatorial+Co. Joy occasional chairs, Jordan. Cushions, Tigger Hall Design. Side table, Orient House. Custom sofa and cushions by Duet. Rug, Cadrys. ▶

THE PALETTE

Dulux Tinker
(formal dining)

Dulux Kolya (formal living room)

Dulux Spanish Olive
(main bedroom)

Paint colours are reproduced as accurately as printing processes allow.

MAIN BEDROOM *This page and opposite top* Walls painted Dulux Spanish Olive. Curtains by Marlow & Finch. Antique Sri Lankan chair. Suzani bedcover, Perryman Carpets. Bedside table, Pond. Antique dresser and artworks. Tuscan Arezzo sisal flooring, International Floorcoverings. **POWDER ROOM** *Opposite bottom* Neisha Crossland 'Anemone' wallpaper, Tigger Hall Design. Vintage Murano wall lights. Custom mirror by Duet. Tapware, Astra Walker. Duravit 'Happy D' vanity, Candana. Popham floor tiles, Onsite Supply+Design.

THIS IS THE LIFE

"I'd been obsessed with the Neisha Crossland 'Anemone' wallpaper in the powder room for a long time," says Kirsten. "I clipped a picture of it from a magazine 20 years ago and had held onto it all this time. When we finally got around to ordering it, the manufacturer said it wasn't being made anymore; we managed to get the last three rolls!"

two years for and Sri Lankan rattan chairs deeply connected to Sanjee's heritage.

Dominique and Shannon saw great value in refurbishing many of the family's existing pieces. An old chair was rejuvenated with striped fabric, and a treasured Murano glass lamp bought to mark the birth of the couple's second daughter, Eliza, was refreshed with a new shade. An artwork found at a Paris flea market 20 years ago was revived with a smart new frame.

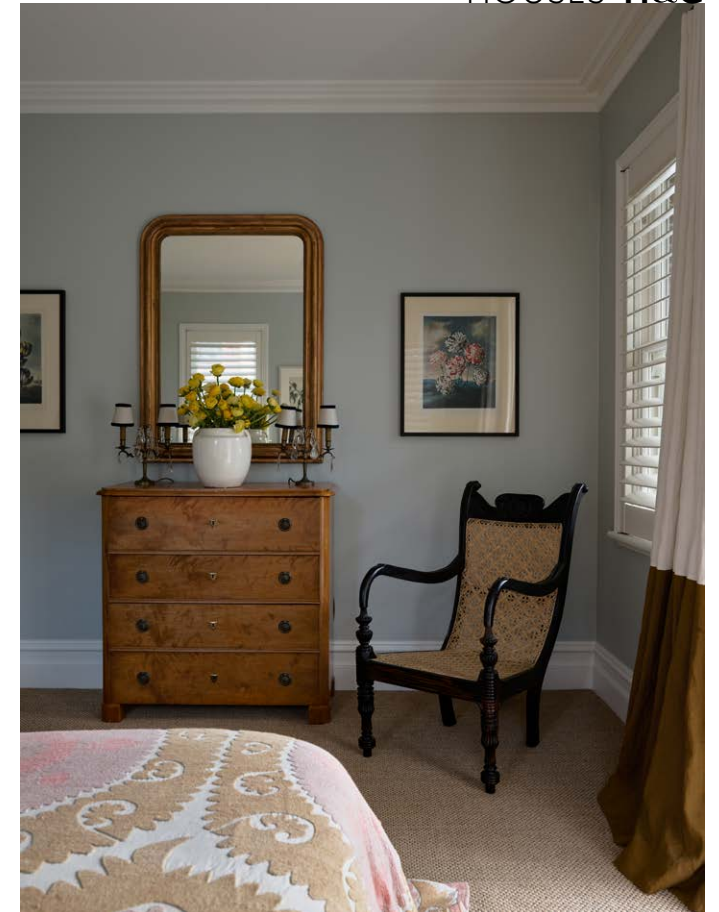
To this they added key contemporary furniture pieces, including a curved Minotti 'Seymour' sofa, stone coffee tables, pastel glass side tables and unusual timber dining chairs that complement the vintage table beautifully. Then to finish, the design duo commissioned some one-off pieces, such as the wavy mirror in the powder room, an upholstered bedhead in Audrey's room, a new brass and marble console in the entrance and a show-stopping high-gloss TV cabinet, custom made by joiner Jonathan West.

The new interior colour scheme is transformative and helps to clearly delineate each room. "We love to use colour as a way of finding your way around a house, particularly in older properties which are arranged in 'rooms' rather than in the open-plan ordering of contemporary spaces," says Shannon. "This way, rooms become identifiable via their colours."

Kirsten says they wanted The Blue Room to be a place the kids could enjoy. "Now they're getting older it's nice for them to have some privacy; somewhere they can retreat to with their friends." On the other hand, the rear living area is more of a communal family space with lighter tones. "My brief was for a sofa that was indestructible and somewhere the five of us could all sit together," she adds. "It's exactly what we got." ▶

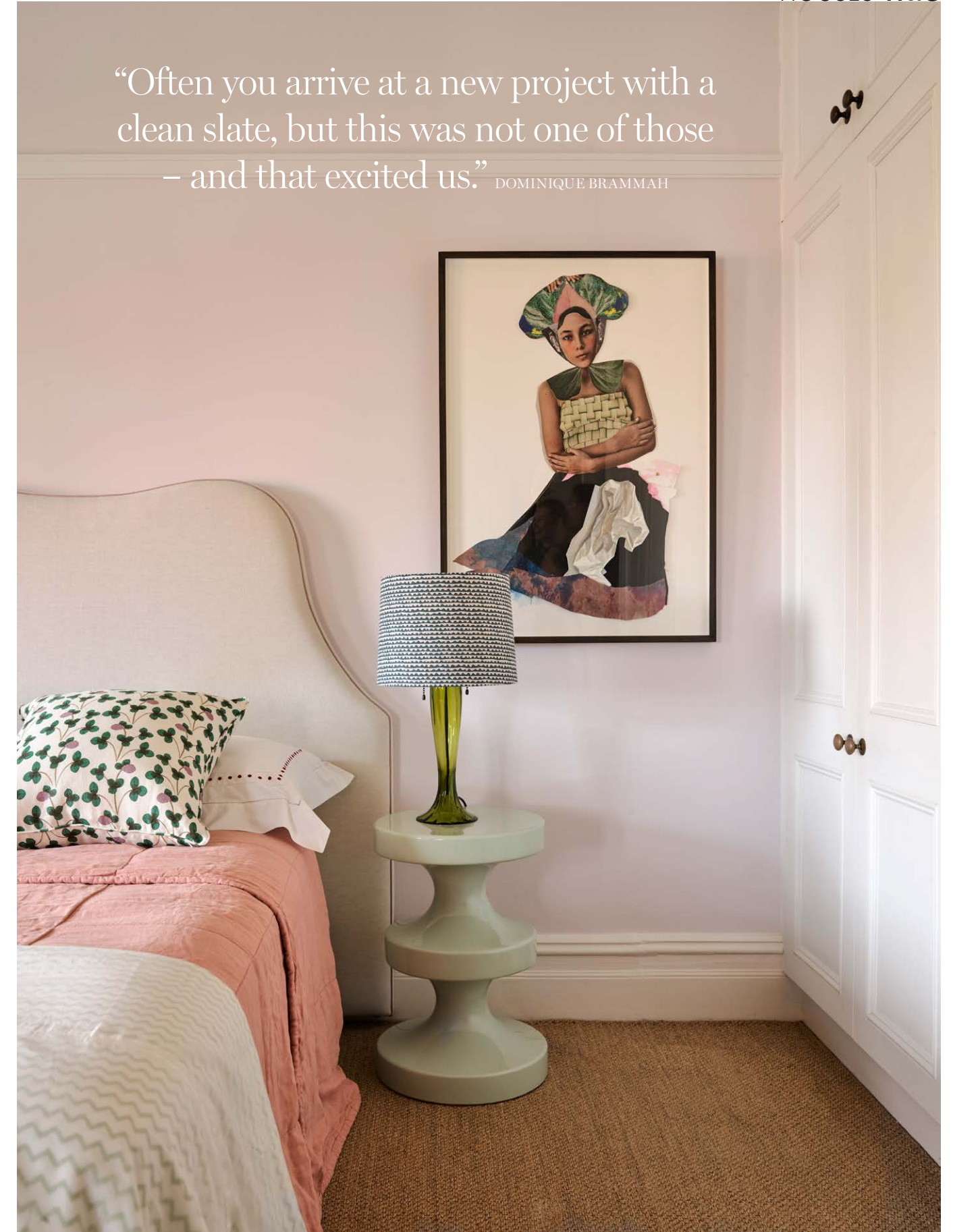
Duet, Thirroul, NSW; weareduet.com.au.

Jonathan West, Botany, NSW; jonathanwest.com.au.





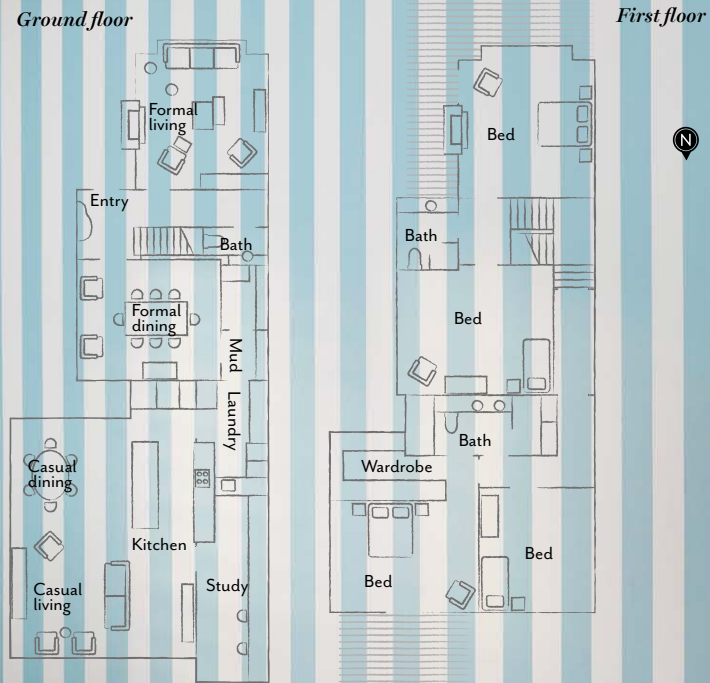
ELIZA'S ROOM *This page and opposite* Walls painted Dulux Bay Fog Quarter. Original mantelpiece. Antique mirror. Silver Linings I ornament by Susan Chen, Curatorial+Co. Amphora vase by Hillary Green. Curtains, Marlow & Finch. Vintage armchair upholstered in Lucy Montgomery 'Classic Stripe'. Accent cushion, Tigger Hall Design. Custom bedhead, cushion and lampshade by Duet. Lamp base, Cavit & Co. Pillowcase and throw, Pigott's Store. Bedcover, Ondene. Artwork by Jackie Stockdale, Olsen Gallery. Bishop stool by India Mahdavi, Moebel. Sisal flooring, International Floorcoverings. ▶



“Often you arrive at a new project with a clean slate, but this was not one of those – and that excited us.” DOMINIQUE BRAMMAH



THE LAYOUT



HARRY'S BEDROOM Wallpaper, Porter's Paints. The artwork is a vintage Italian poster. Lamp, Vox Populi. The dresser is a simple pine unit that Dominique and Shannon smartened up with a coat of paint and new handles from Mother of Pearl & Sons Trading. Bedcover, Sally Campbell Handmade Textiles. Sisal flooring, International Floorcoverings.



THE SOURCE

Vibrant colour gives traditional forms a contemporary twist. Pair with crisp white for extra freshness.



Produced by Nina Dorn.

1 Thomas O'Brien 'Vivian' chandelier, POA, The Montauk Lighting Co. 2 Tao floor lamp, \$995, Coco Republic. 3 A Touch of Pink sculpture by Katarina Wells, \$1100, Curatorial+Co. 4 Richter wall mirror, \$229, Domayne. 5 Antique bookcase, \$4612, 1stDibs. 6 Tropic Hamptons cushion, \$49.95, Oz Design Furniture. 7 Francoise dining chair, POA, Xavier Furniture. 8 Miro dining table, \$1999, Freedom. 9 Chamonix Extra Large Tufted 4-seater sofa, \$4995, Coco Republic. For Where to Buy, see page 190. H&G